

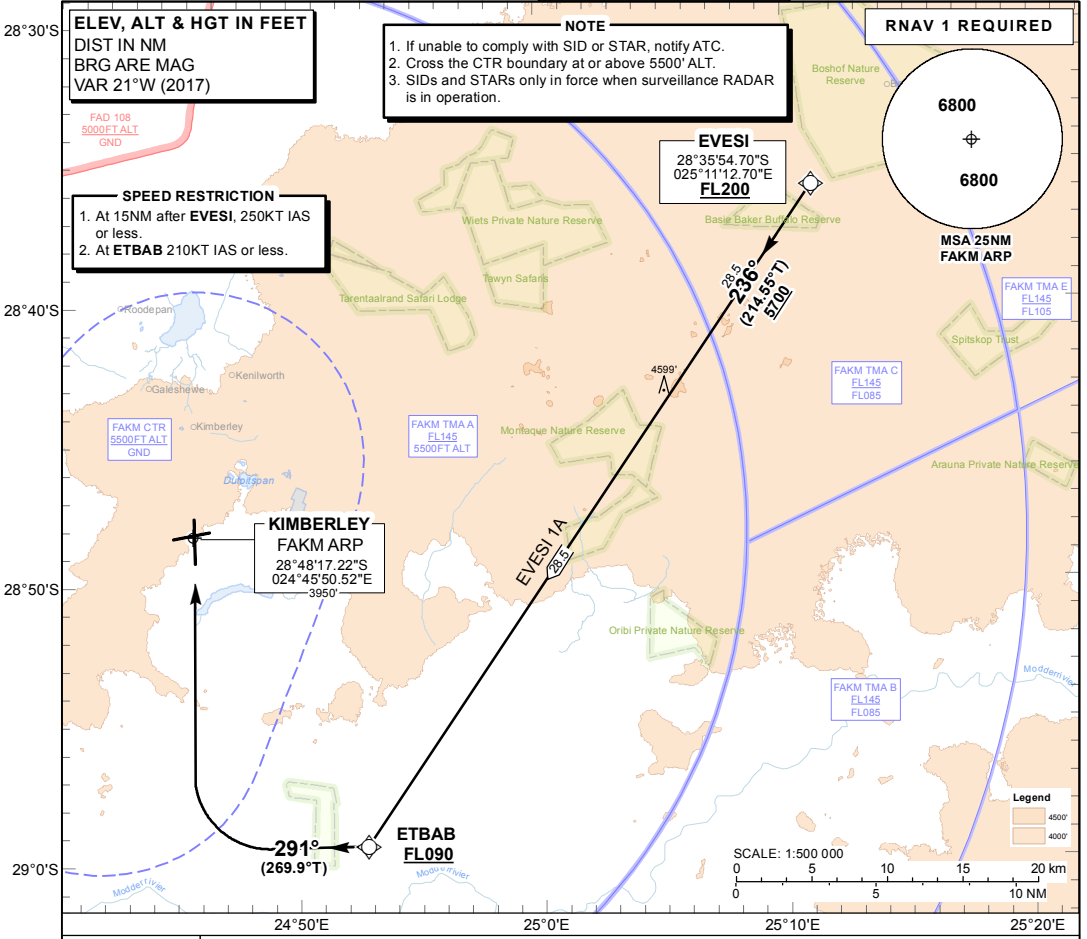
**STANDARD ARRIVAL CHART - INSTRUMENT (STAR)**

TRANSITIONAL ALTITUDE  
**7000'**  
TRANSITIONAL LEVEL  
**ATC**

KIMBERLEY TWR: 118.20  
APN: 122.65  
BLOEMFONTEIN APP: 124.30



**KIMBERLEY NAV (GNSS) RWY 02 EVES1 1A**



**EVESI 1A: RWY 02**

Leave EVESI for ETBAB. At ETBAB turn right and continue on the RNAV (GNSS) APCH RWY 02.

**COMMUNICATION FAILURE PROCEDURE (Squawk 7600)**

**Before EVESI:** Proceed to EVESI and continue on EVESI 1A RNAV (GNSS) RWY 02 STAR to ETBAB. At ETBAB enter the RNAV (GNSS) RWY 02 hold at FL110. Hold for minimum 5 MIN, then descend in the hold to FL090 and complete the RNP APCH RWY 02.

**After EVESI:** Continue on the EVESI 1A RNAV (GNSS) RWY 02 STAR to ETBAB. At ETBAB enter the RNAV (GNSS) RWY 02 hold at FL110. Hold for minimum 5 MIN, then descend in the hold to FL090 and complete the RNP APCH RWY 02.

CHANGE: New Procedure